

# COLLEGE LEARNING RESOURCES

An Orientation



# OPENING TIMES

## College Library

### Opening hours:

**ONLY** Monday – Friday  
8.00 a.m. - 5.00 p.m.



# FIND

Books & Collections

- **Library Catalog (OPAC)**

Search for resources from **Libraries in Chula** at  
<https://www.car.chula.ac.th>

- **Chulalongkorn University  
Intellectual Repository (CUIR)**

Digital collection of full text academic works belongs to CU Community for e.g. Theses, Research reports, Journal Articles, Special lectures at  
<https://cuir.car.chula.ac.th/>



- **Thesis**

Search for full theses at **CUIR** or **OPAC**

- **CU Reference Databases**

Cover a variety of online / full-text subscriptions, and free trials databases provided on the campus network at <https://www.car.chula.ac.th/curef.php>

- **Journal of Health Research**

- Indexed in **Scopus** since 2018 in **Quartile 3**
- Journal Impact Factor (**JIF**) 2022 = 1.7
- Full article is available for free
- URL: <https://digital.car.chula.ac.th/jhr/>



# EZproxy



## EZproxy

Log-in with **CUNET Account**

Username

Password

LOGIN

I agree to **Terms and Conditions**

## Log-in to access eResources

กรุณาเข้าสู่ระบบ เพื่อใช้งานทรัพยากร  
สารสนเทศอิเล็กทรอนิกส์

LOG-IN INSTRUCTION

Log-in EZproxy with  
your CUNET account to  
access eResources from  
the University

## • Borrowing

CU Undergraduate Student >> 10 items >> 20 days

CU Graduate Student >> 20 items >> 30 days

CU Instructor / Staff >> 20 items >> 30 days

### NOTE

- Reference book / Thesis can borrow **ONLY 1 Item / Day**
- Total limit includes all material borrowed from all libraries at Chulalongkorn University





- **Book Delivery Service**

By requesting services through the Library Catalog (OPAC) at **Chulalinet's Book Delivery Request**

- **Plagiarism Checking (Turnitin)**

Check for how many percentage you copy other's work for your work, QE proposal, thesis, dissertation

- The **acceptable** Turnitin percentage is **≤40%**
- Students are allowed to use only **3 times /day** by using **CU email account** (...@student.chula.ac.th)

- **EndNote**

To manage your citation style for your work or thesis

- Download Set Up File & Product key at <https://www.car.chula.ac.th/endnote.php> by using CUNET Account

(Group training provided / individual per request)

- **Journal Indexing & Journal Metrics**

Check for a journal is indexed in an international database with Quartile Score, JIF, SJR etc.

- Scopus (<https://www.scopus.com/>)
- Journal Citation Reports: JCR (<https://jcr.clarivate.com/>)





## • Online Searching

Search for full-articles, e-journals, e-books from online databases



- **Library Catalog (OPAC)** at <https://library.car.chula.ac.th>  
Search for books, journal, thesis, report etc in CU Libraries
- **Single Search** at <http://www.car.chula.ac.th/singlesearch/>  
Search for books, ebooks, academic journals, etc from EBSCO Discovery Service (EDS)
- **Publication Finder** at <https://www.car.chula.ac.th/>  
Find resources available from the library' collection

# SEARCH TIPS

- **Simple Search**

- **Title** : the title of the article, or book you are looking for
- **Author** : use the last name, follow by the first name
- **Keyword** : a word/phrase that describes the topic

- **Advanced Search**

Use Boolean operator;

**AND** : to find articles with both of two terms together

e.g. *health education AND secondary school*

**OR** : to find articles with one or both terms

e.g. *health education OR health promotion*

**NOT** or **AND NOT** : to find articles which have the first term but not the second term

e.g. *health education AND NOT health promotion*



# Most Use DATABASES

Public Health & Public Health Sciences

- **PubMed**

Contains more than 36 million citations and abstracts of biomedical literature

- **Scopus**

A largest abstract and citation database of peer-reviewed literature: journals, books, and conference proceedings

- **ScienceDirect**

The world's largest subscription-based collection of scientific, technical, medical and social science research journals



- **Academic Search Ultimate**

A large interdisciplinary database with >4000 scholarly journals

- **Journal Citation Reports (JCR)**

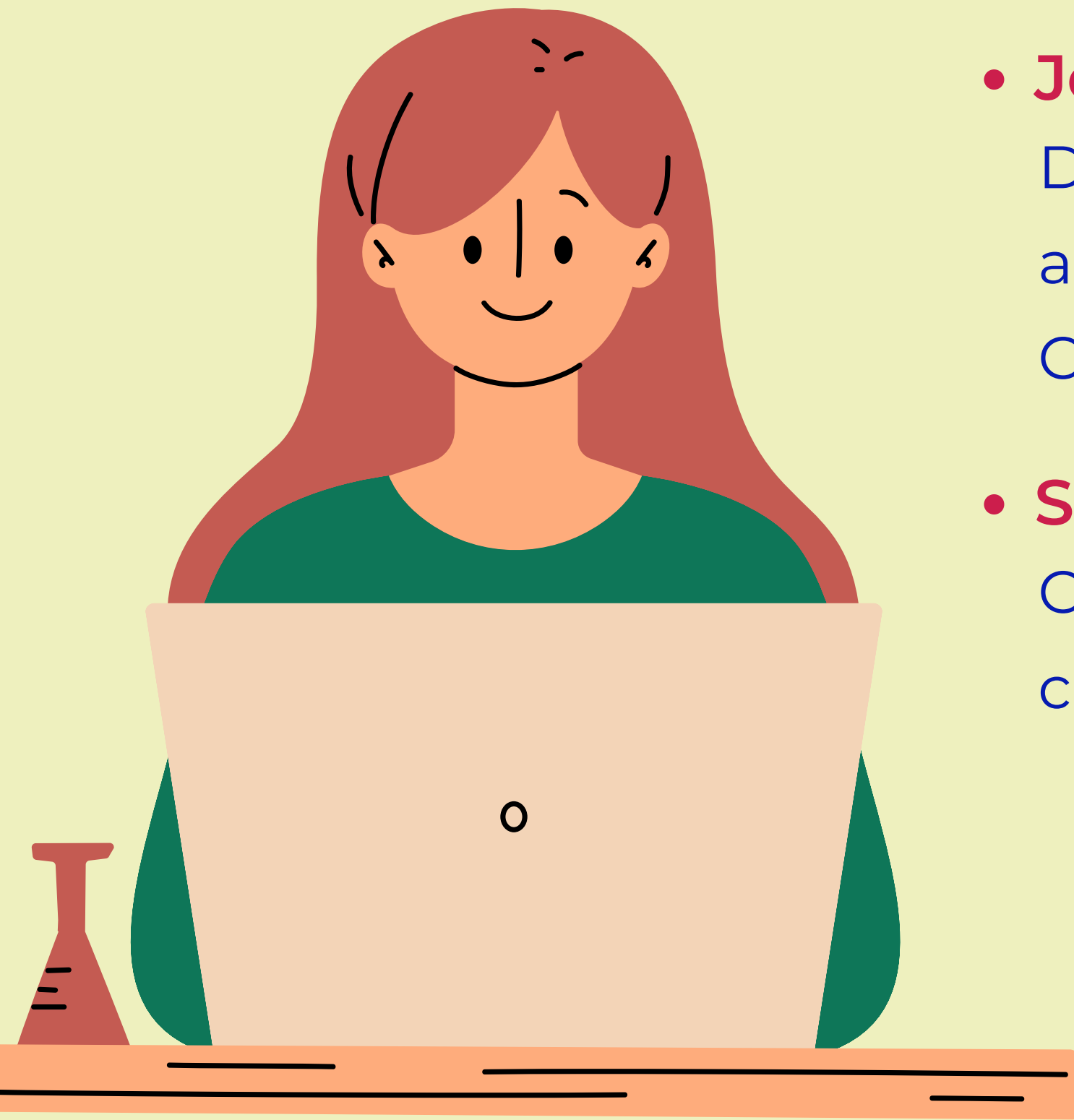
Database in Web of Science for finding journal value and metrics e.g. Journal Impact Factor (JIF), Journal Citation Indicator (JCI), Journal Quartile & Percentile

- **SpringerLink**

Online collection of articles, journals, books, and book chapter across of subject disciplines

- **Wiley Online Library**

An electronic collection of over 850 full-text journals



# More Assistance

**Ms. Surada Suwannapak**

Email: [Surada.s@chula.ac.th](mailto:Surada.s@chula.ac.th) Tel. 0 2218 8046

**Ms. Sunanta Wongchalee**

Email: [Sunanta.w@chula.ac.th](mailto:Sunanta.w@chula.ac.th) Tel. 0 2218 8047



CPHS Library >> <https://library.cphs.chula.ac.th/>

Central Library >> <https://www.car.chula.ac.th/>



<https://www.facebook.com/CPHSLib>

