

# COLLEGE LEARNING RESOURCES

## An Orientation





Welcome 

# LOCATION AND HOURS

---

## Location

**11th Fl.,**  
Sabbasastravicaya Bldg.

## Opening hours

**ONLY** Monday – Friday  
8.00 a.m. – 5.00 p.m.



# LIBRARY RESOURCES

---

## Book & eBook

Search for resources at <https://www.car.chula.ac.th>

## Chula Digiverse

(formerly known as Chulalongkorn University Intellectual Repository)

Digital collection of scholarly works belongs to CU Community e.g. Theses, Research reports, Journal Articles available at

<https://digiverse.chula.ac.th/>



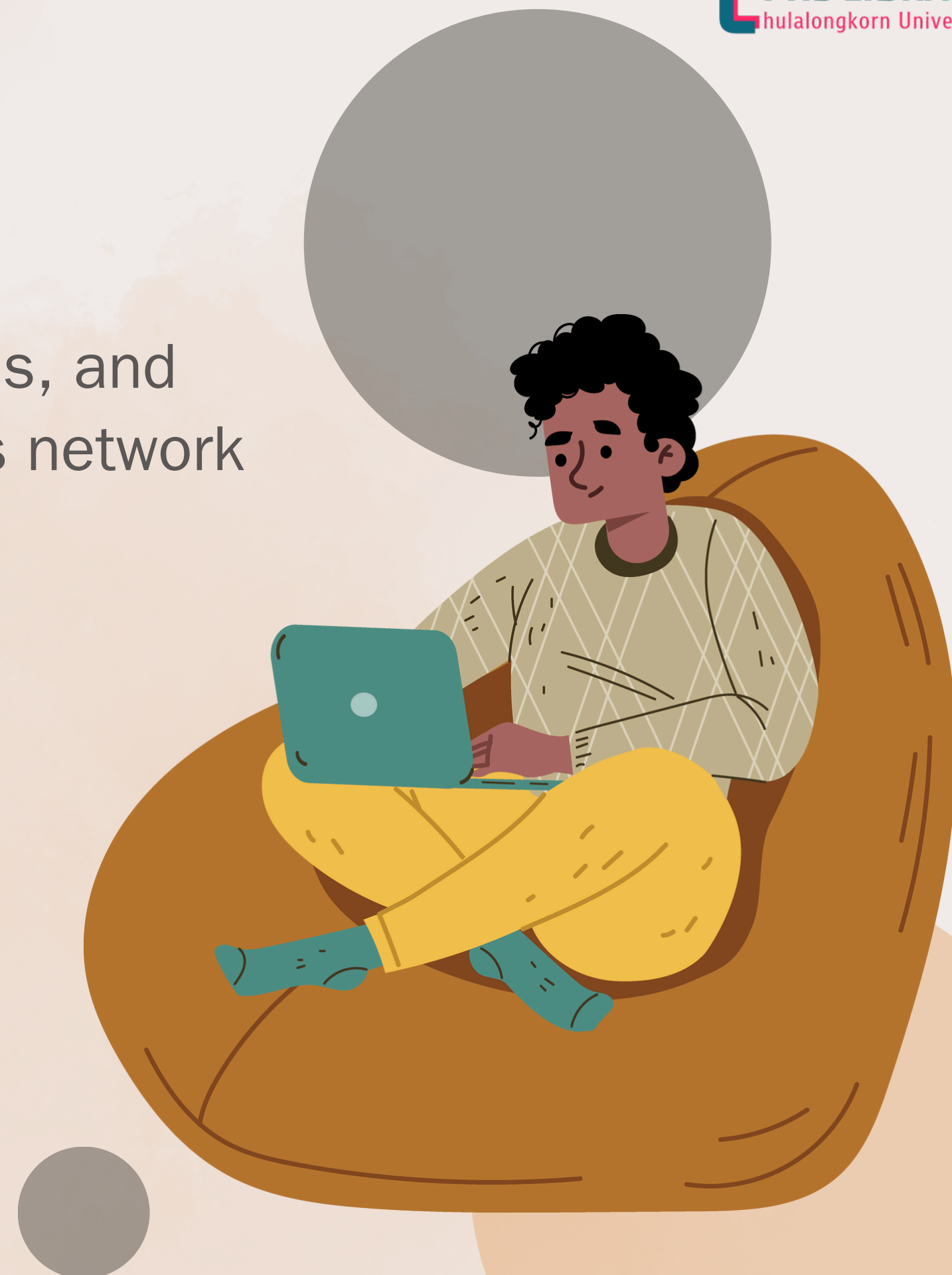
# Article, Journal, & Database

Go to **CU Reference Databases**  
(<https://www.car.chula.ac.th/curef.php>)

Cover a variety of online/full-text subscriptions, and free trials databases provided on the campus network

## Journal of Health Research

- First issue > 1987
- Indexed in Scopus since 2018 in Quartile 3
- JCR database > JIF 2023 = 0.9, Quartile 4
- Full article is available for free at <https://digital.car.chula.ac.th/jhr/>
- Facebook > <https://www.facebook.com/JHealthRes>





# MOST USE DATABASES

---

## ScienceDirect

The world's largest subscription-based collection of scientific, technical, medical and social science research journals.

## PubMed

Contains more than 36 million citations and abstracts of biomedical literature.

## Scopus

A largest abstract and citation database of peer-reviewed literature: journals, books, and conference proceedings.



## Journal Citation Reports (JCR)

Database in Web of Science for finding journal value and metrics e.g. Journal Impact Factor (JIF), Journal Citation Indicator (JCI), Journal Quartile & Percentile

## JSTOR

Provides access to academic journals, books, and primary sources in many disciplines.

## Wiley Online Library

A comprehensive online resource offering a vast collection of scientific and scholarly content across multiple disciplines, including public health.





# ACCESS RESOURCES OFF-CAMPUS

---

## VPN (Cisco AnyConnect)

VPN service allows CU members to access university network services from outside the university. Download from **<https://www.it.chula.ac.th/en/service/en-vpn/>**

## EZproxy

Log-in EZproxy to access eResources

Log-in with your CUNET account to download the software or log-in EZproxy





# LIBRARY SERVICES

## Borrowing

CU Undergraduate Student	>>	<b>10 items</b>	>>	<b>20 days</b>
CU Graduate Student	>>	<b>20 items</b>	>>	<b>30 days</b>
CU Instructor / Staff	>>	<b>20 items</b>	>>	<b>30 days</b>

## Book Delivery Service

By requesting services through the Library Catalog (OPAC) at **Chulalinet's Book Delivery Request**



- Reference book can borrow ONLY 1 Item / Day.
- Total limit includes all material borrowed from all libraries at Chulalongkorn University.
- For Book Delivery Service > ONLY 1 time / Day.







## Plagiarism Checking (**Turnitin**)

Check the percentage of copied content in your work, QE proposal, thesis, or dissertation.

- The acceptable Turnitin percentage is  $\leq 40\%$
- Students are allowed to use **only 3 times /day** by **using CU email account** (....@student.chula.ac.th)

## EndNote

To manage your citation style for your work or thesis.

- Download Set Up File & Product key at **<https://www.car.chula.ac.th/endnote.php>** by using CUNET Account.
- Group training provided / individual per request.





## Journal Indexing & Journal Metrics

Check for a journal is indexed in an international database with Quartile Score, JIF, SJR etc.

- Scopus (<https://www.scopus.com/>)
- Journal Citation Reports: JCR (<https://jcr.clarivate.com/>)

## Online Searching

Search for full-articles, e-journals, e-books from online databases;

- Library Catalog (OPAC) > <https://library.car.chula.ac.th>  
Search for books, journal, thesis, report etc. in CU Libraries.
- Single Search > <http://www.car.chula.ac.th/singlesearch/>  
Search for books, ebooks, academic journals, etc. from EBSCO Discovery Service (EDS).



# SEARCH TIPS

## Simple Search

- **Title** : the title of the article, or book you are looking for
- **Author** : use the last name, follow by the first name
- **Keyword** : a word/phrase that describes the topic

## Advanced Search

Use Boolean operator;

**AND** : to find articles with both of two terms together

*e.g. health education AND secondary school*

**OR** : to find articles with one or both terms

*e.g. health education OR health promotion*

**NOT** or **AND NOT** : to find articles which have the first term but not the second term

*e.g. health education AND NOT health promotion*



# STAY INFORMED

---



**CPHS Library >> <https://library.cphs.chula.ac.th/>**

**Central Library >> <https://www.car.chula.ac.th/>**



**<https://www.facebook.com/CPHSLib>**

# ASK FOR HELP

---

**Ms. Surada Suwannapak**

Email: [surada.s@chula.ac.th](mailto:surada.s@chula.ac.th) Tel. 0 2218 8046

**Ms. Sunanta Wongchalee**

Email: [sunanta.w@chula.ac.th](mailto:sunanta.w@chula.ac.th) Tel. 0 2218 8047