



CPHS LIBRARY
CHULALONGKORN UNIVERSITY

COLLEGE LEARNING RESOURCES

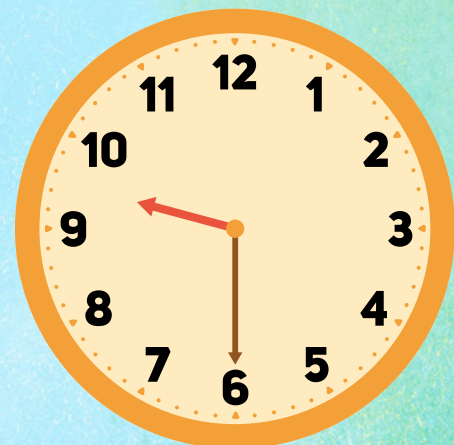
An Orientation





CPHS LIBRARY
CHULALONGKORN UNIVERSITY

Welcome



LOCATION AND HOURS

Location

11th Fl.,
Sabbasastravicaya Bldg.

Opening hours

ONLY Monday – Friday
8.00 a.m. – 5.00 p.m.



LIBRARY RESOURCES

Book & eBook

Search for resources at

<https://www.car.chula.ac.th>

Chula Digiverse

A digital collection of scholarly works belongs to CU Community e.g. Theses, Research reports, and Journal Articles.

Available at <https://digiverse.chula.ac.th/>





Single Search / EBSCO Discovery Service

Search for books, articles, or theses in one place. Just enter your keyword, and you'll see results from many databases. Easy and fast!!!

<https://www.car.chula.ac.th>

Single Search[®]

Search for books, ebooks, academic journals, etc from EBSCO Discovery Service (EDS).

Subscribed Content require **EZproxy** login

SEARCH





CU Reference Databases

A collection of academic databases covering various subject areas, provided for CU members.

Go to <https://www.car.chula.ac.th/curef.php>

Journal of Health Research

First issue > 1987

Indexed in **Scopus** since 2018 in **Quartile 2**

WoS > JIF 2024 = 0.7, Quartile 4

 <https://digital.car.chula.ac.th/jhr/>

 **JHealthRes**



MOST USE DATABASES

PubMed

A free database of biomedical and life sciences literature from MEDLINE.

ScienceDirect

A full-text database offering journal articles & book chapters across 4 major subject areas: Physical Sciences and Engineering, Life Sciences, Health Sciences, and Social Sciences and Humanities.





Wiley Online Library

A full-text academic database providing access to peer-reviewed journals and books in public health, medicine, nursing, social sciences, and more.

Scopus

A multidisciplinary abstract and citation database covering peer-reviewed literature from journals, books, and conference proceedings. It provides journal metrics such as **Journal Quartile** (Q1–Q4) for ranking and **CiteScore** for citation impact.

Journal Citation Reports (JCR)

JCR provides **Impact Factors (JIF)** and **journal rankings** to help evaluate and compare the quality of academic journals indexed in the [Web of Science \(WoS\)](#).





ACCESS E-RESOURCES

VPN (Cisco AnyConnect)



VPN service allows CU members to access university network services from outside the university. Download from

<https://www.it.chula.ac.th/en/service/en-vpn/>

EZproxy

Log-in EZproxy to access eResources.



Use your CUNET account to download software or access databases via EZproxy.





LIBRARY SERVICES & SUPPORT

Borrowing Books

CU Undergraduate Student	>>	10 items	>>	20 days
CU Graduate Student	>>	20 items	>>	30 days
CU Instructor / Staff	>>	20 items	>>	30 days

Book Delivery Service

CU members can request the books from other faculty libraries through the Library Catalog (OPAC) using **Chulalinet's Book Delivery Request**. The service operates once a day.





Plagiarism Checking (Turnitin)

Check the percentage of copied content in your work, QE proposal, thesis, or dissertation.

- Acceptable similarity score is **$\leq 40\%$**
- Students can use Turnitin **only 3 times/day** with their CU email (**....@student.chula.ac.th**)

(Please contact the library staff before using the service)

EndNote

To manage your citation style for your work or thesis. Download the Set Up File & Product key at **<https://www.car.chula.ac.th/endnote.php>** with your CUNET Account.



Journal Indexing & Journal Metrics

Check whether a journal is indexed in international databases, with **journal metrics** such as [Journal Quartile](#), [CiteScore](#), and [JIF](#), available from **Scopus** or **JCR** database.

Reading & Study Spaces

Students are welcome to use the reading areas during library hours.

As the College Library has limited space, students may also use the Central Library and branch libraries at Chamchuri 9 and 10.

(The Central Library might be open 24 hours during exam periods, so please check the CU Library website first)





CHULA AIX : GENERATIVE AI

Chula AIX is a space where you can try and learn to use helpful AI tools. Located on the 1st floor of the Central Library. (For CU members only).

Subscribed AI tools available:



AI chat & summarization



ChatGPT,



Gemini,



Claude



Writing improvement & Grammar checking



QuillBot,



Grammarly



Creative content & media generation



Suno,



Runway



Research & academic discovery



SciSpace,



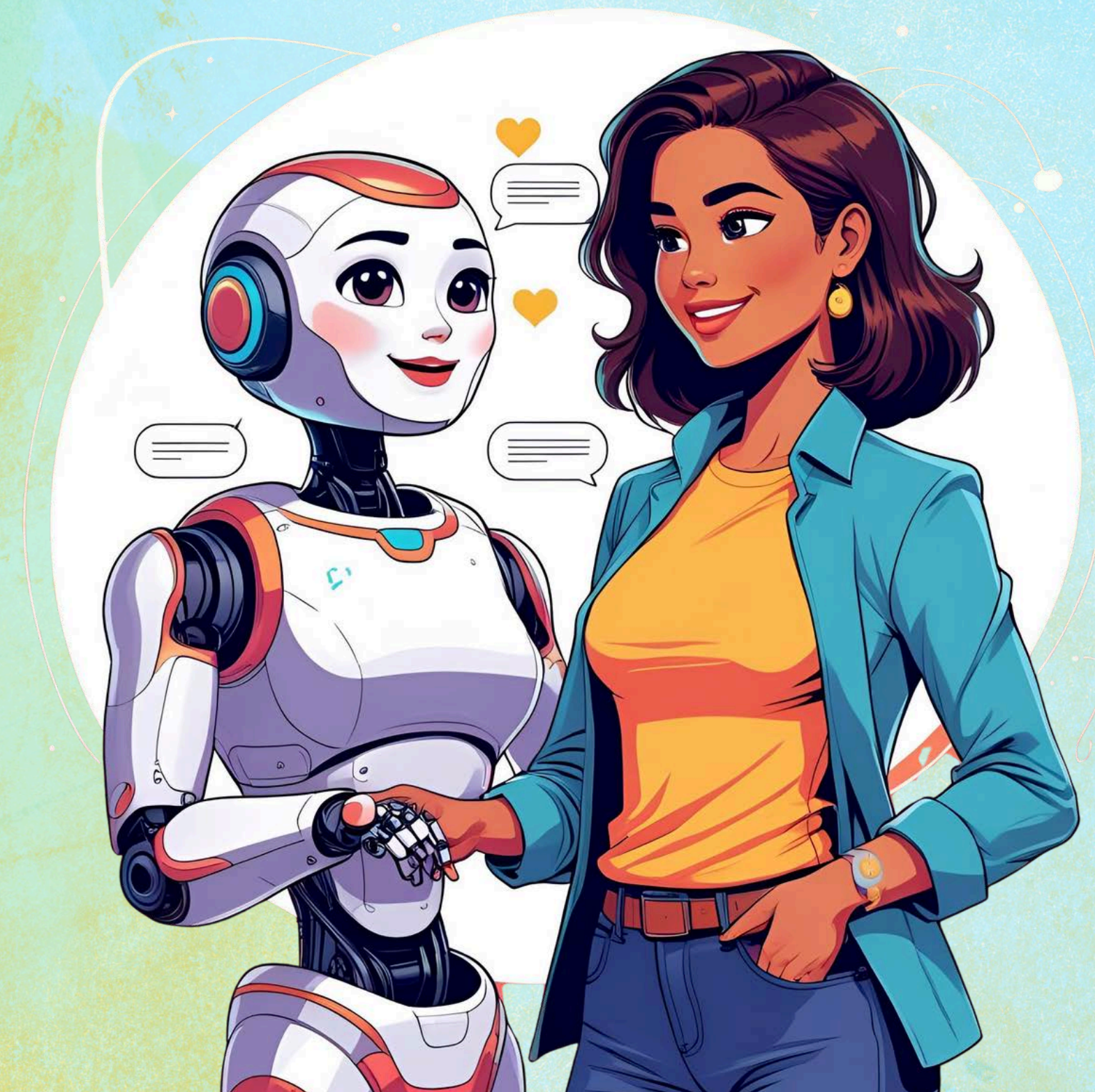
Scholarcy,



Consensus,



Connected Papers





CPHS LIBRARY
CHULALONGKORN UNIVERSITY



STAY INFORMED

CPHS Library  <https://library.cphs.chula.ac.th/>

 **CPHSlib**

Central Library  <https://www.car.chula.ac.th/>

 **ChulaLibrary**

 **CURef**

ASK FOR HELP

Ms. Surada Suwannapak  surada.s@chula.ac.th

Ms. Sunanta Wongchalee  sunanta.w@chula.ac.th